



Flange Isolation Kits

Please select your quantity, nominal pipe size (inches), ANSI class, gasket type, gasket material and if trojan select the sealing element and retainer materials.

Qty	Nominal Pipe Size	ANSI Class	Gasket Type	Gasket Style or Material	If Trojan, Select one of each Seal Element / Retainer	Washers	Washer Materials	Sleeve Material	Gasket I.D.	Type Flange
Specify Below	Specify Below	150# 300# 400# 600# 900# 1500# 2500#	E F	T=Trojan N= Nitrile/ Phenolic JMRD D DG	Nitrile Viton® PTFE	Phenolic G-7 G-10 G-11	SW= Single Washer DW= Double Washer	I= Minlon G-7 G-10 G-11 D DG	P= Polyethylene MY= Mylar N=Nomex M=Phenolic G-7 G-10 G-11 D DG	Specify Below W= Weld Neck S = Slip on RTJ R BX RX O= Other
Qty.	Nominal Pipe Size	ANSI Class	Gasket Type	Gasket Style or Material	If Trojan, Select one of each Seal Element / Retainer	Washers	Washer Materials	Sleeve Material	Gasket I.D.	Type Flange

1. _____

2. _____

3. _____

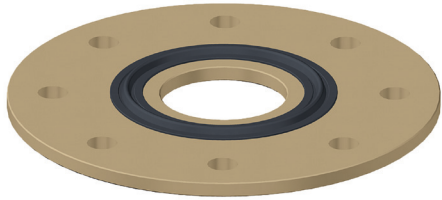
For Flange Insulation Kits over 24" in addition to the above please specify:
Use separate sheet for each gasket over 24" in diameter.

Flange I.D.	_____	Sleeve Length	_____
Flange O.D.	_____	Pipe I.D.	_____
Flange Thickness	_____	Steel Sleeve I.D.	_____
No. of Bolts	_____	(for Concrete Pipe)	
Bolt Diameter	_____	Product Line	_____
Bolt Hole Diameter	_____	AWWA Class	_____
Bolt Circle Diameter	_____	& Table or Other Similar Std.	
		Internal Lining	_____

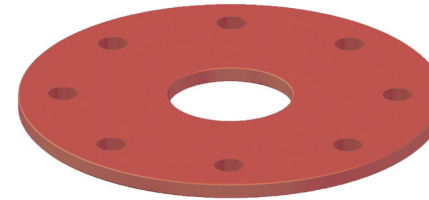
Contact Information:

Name	_____
Company	_____
Address	_____
City/State/Postal	_____
Phone	_____
Signature	_____
Date:	_____

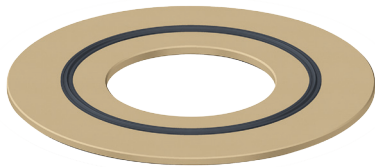
Trojan Full Face Gasket (Type E)



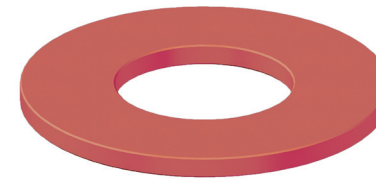
Full Face Gasket (Type E)



Trojan Ring Type Gasket (Type F)



Ring Type Gasket (Type F)

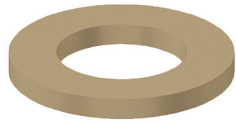


Type	Water Absorption %	Tensile Strength PSI	Compression Strength PSI	Dielectric Value VPM	Max. Continuous Operation Temp.	
CE	3.50	12,000	34,000	400	257°F	125°C
G7	0.09	22,000	40,000	400	400°F	204°C
G10	0.01	40,000	66,000	800	248°F	140°C
G11	0.20	43,000	63,000	900	347°F	175°C
XPN	1.50	18,000	45,000	600	266°F	130°C
XP	1.50	18,000	45,000	600	266°F	130°C

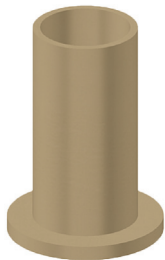
Material	Operating Temp	
Nitrile	-60°F to 240F	-51°C to 116°C
Viton®	-75°F to 400°F	-59°C to 204°C
PTFE	-100°F to 450°F	-73°C to 232°C



Sleeve



Washer



One-Piece Sleeve & Washer

Sleeves & One-Piece Sleeve & Washer

Material	Dielectric Strength volts/mil	Water Absorption %	Max. Continuous Operation Temp.	
Polyethylene	450	0.01	105°F	41°C
Phenolic	400-500	1.10	225°F	107°C
Mylar	4,000	0.80	300°F	149°C
Minlon	1,200	0.22	250°F	121°C
Nomex	400	-	450°F	232°C
G-10	530	0.09	285°F	140°C